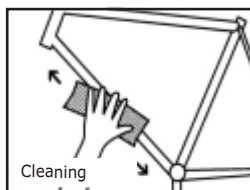


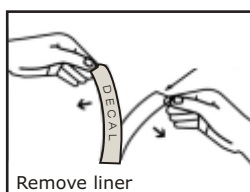


Reflective decal

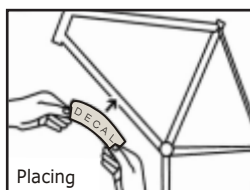
under clear powdercoating



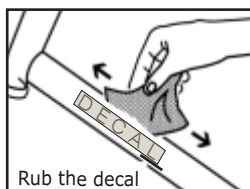
Be sure that the object has a minimal temperature of 16 degrees and the surface is clean, free from dust, grease and oxidations. To avoid problems you may use a degreaser like IPA or an other degreaser who's friendly for the used powdercoat finish.



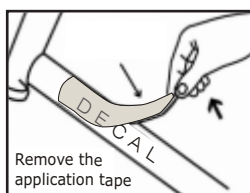
Remove the liner from the decal carefully.



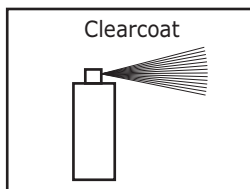
Find the right position with help of the printed register signes. After you are sure that the position is correct, you can put the decal on the surface. If there's an error you can remove the decal easily but don't wait to long because after a while the decal will stick permanently.



Rub the decal, starting from the middle, carefully with some pressure. It's recommended to use dustfree cotton gloves. Be sure you didn't forgot some places.



Remove the application tape under a sharp angle. Inspect the decal if it is placed correctly and without airbubbles. In case of bubbling you may use a needle to prick them away. If this brings no solution then check if there is no dust or whatever between the surface and the decal. To improve the adhesion you may heat the decorated surface for at least 30 seconds on an object temperature of 60 degrees.



Finishing of frames with clearcoat, powder or liquid.



Reflective decals do have a long shelf life. The duration of this shelf life depends of the conditions of your warehouse. Stored flat in the original packaging by room temperature with a humidity of approximately 50% will keep the decals useable for years.